



# Year 2

## Questioning

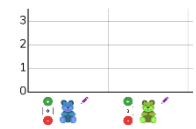
### Key Learning

- To understand how data can be used to help answer a question.
- To ask an appropriate question, gather data using a tally chart and present it using digital tools.
- To begin to explore how yes or no questions can be used to sort data.
- To understand how branching databases work and practise navigating them to find answers.

### Key Images

Favourite Foods	Tally	Total
Pizza		6
Chips		12
Burger		4
Hot Dog		8

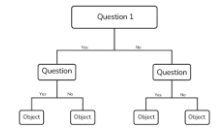
Tally Chart



Pictogram



Yes or No Questions



Branching Database

### Key Vocabulary

#### Branching Database

A type of database that uses yes or no questions to help sort and identify objects.

#### Pictogram

A diagram that uses pictures to represent data.

#### Closed Question

A question that offers a set of answers or options for a person to choose from.

#### Sorting

The process or operation of ordering items and data in a certain way.

#### Data

A collection of information, used to help answer questions.

#### Tally Chart

A table used to record and count data using tally marks.

#### Open Question

A question that can't be answered with yes or no and requires extra detail.

#### Yes or No Question

A type of closed question that is answered using the words 'Yes' or 'No'.

### Key Questions

#### Why does a question need to be asked to gather data?

Asking a question allows a person to collect meaningful data instead of random facts and figures.

#### How is asking yes or no questions different to asking a regular question?

A yes or no question is a closed question. It only gives two possible answers.

#### Why are yes or no questions useful?

They help a person to sort and group objects and help to narrow down a choice.