



## Canon Popham CofE Primary Academy SEND & Inclusion Newsletter

Summer 2, 2025

Thank you for taking the time to read our half-termly newsletter full of information and tips for parents. If you have any questions related to SEND, please contact your child's class teacher or [sendco@cpa.dsat.education](mailto:sendco@cpa.dsat.education)

### The Sleep Charity

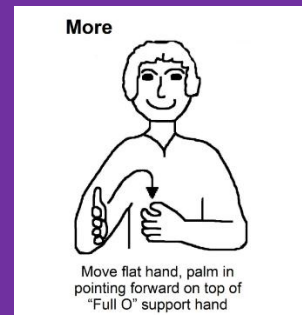
Around **4 in 10 children** will experience a sleep problem at some point and this rises to **8 out of 10 children** where there is a diagnosis of Special Educational Need or Disability (SEND). These problems are typically persistent and do not resolve themselves without intervention

The Sleep Charity offer advice, support and a helpline for families and high quality information and advice to deal with most sleep issues, and ensure everyone understands the value of a good night's sleep.

<https://thesleepcharity.org.uk/information-support/children/>



### Spotlight Makaton Sign for Summer 2



The use of 'more' is a great sign to know. It helps us communicate our needs/wants and allows adults to prepare for a transition e.g. 1 more turn, then finished. We use this sign often around school.



### Did you know?

You can request a visual strain examination from your opticians using coloured overlays or filters to assess discomfort of reading on different coloured backgrounds.

## What are Special Educational Needs? (SEN)



Some children may have SEN because of a medical condition or a disability. Other children may have SEN without a diagnosis or a disability.

A child or young person has a learning difficulty or disability if they:

- Have a significantly greater difficulty in learning than the majority of others the same age.
- Have a disability which prevents or hinders them from making use of facilities of a kind generally provided for others of the same age in mainstream educational settings.

**Doncaster Local Offer-** <https://www.doncaster.gov.uk/services/schools/local-offer-what-is-send>

## Updates to Medical Tracker

We have been using Medical Tracker for several years now to report incidents to parents. We have now started to add all of our Medical Care Plans onto Medical Tracker. All correspondence regarding medication/inhaler expiries will now be sent via email to parents through Medical Tracker. Asthma Care Plans will also be sent to families to review in September so you are able to add any changes and updates. If you need further support in using this system, we are happy to help!



### Upcoming events in the Area & useful SEND contacts & information

Doncaster Family Hubs- East Doncaster Family Hubs are committed to help all families with a child to promote the best start in life and progress to reaching their individual full potential. Located on Mere Lane, Armthorpe.

Doncaster Local Offer-  
<https://www.doncaster.gov.uk/services/schools/local-offer-send>



### Work behind the scenes in Summer 2

- We have been visited by our Transformation SEND team in the Local Authority who stated **"SEND provision at Canon Popham CofE Primary is strong"**
- Hungerhill staff have visited our Y6 children, they have been involved in discussions with Miss Simpkin over the past few months and our Y6's have had a great time at their transition visits.
- We have developed Transition Booklets to pupils across school who will benefit from pictures and descriptions of their new classroom environments for September
- Mrs Eastwood and Mrs Slack have graduated from the BOSS Behaviour Academy!